



GMT MONTHLY MEMBERSHIP PROGRESS REPORT

Results as of: 9/30/2019

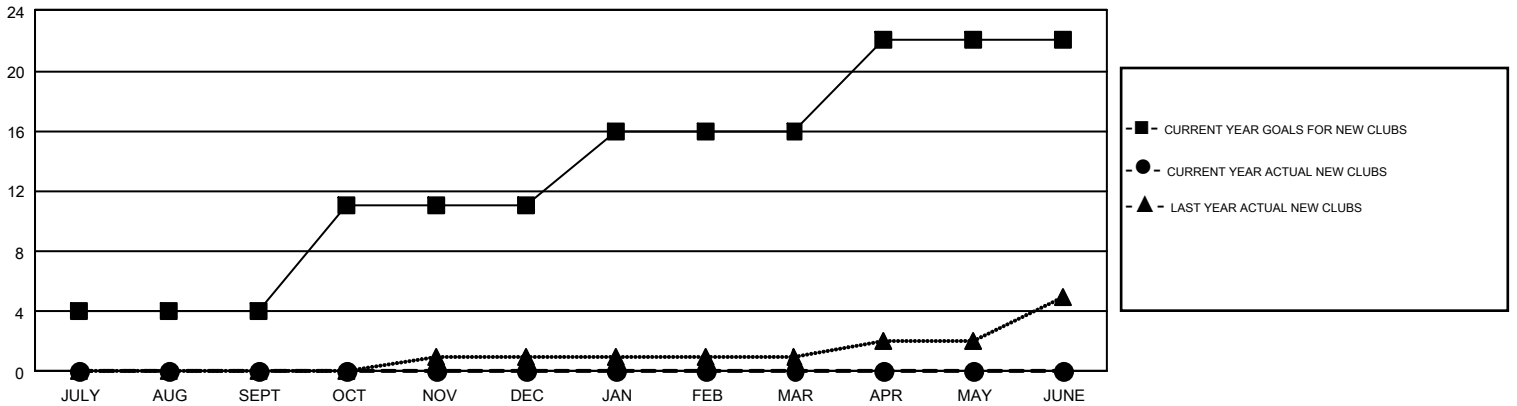
GMT Constitutional Area 1, Group J

GMT: OPEN

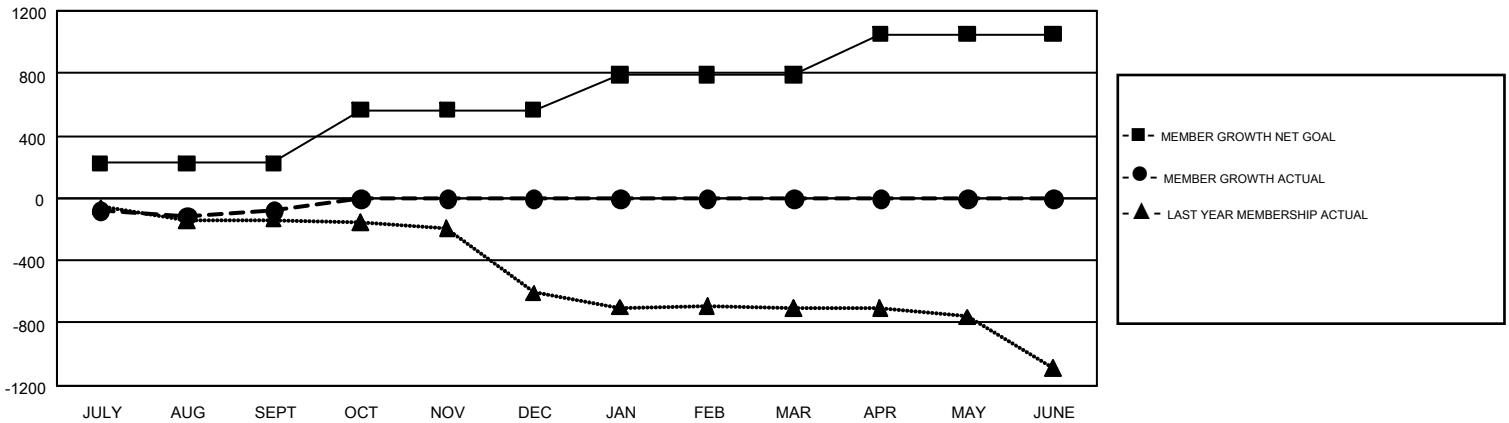
REPORT DOES NOT INCLUDE CLUBS IN UNDISTRICTED AREAS.

Clubs				Members			
RESULTS FOR 2019-2020				RESULTS FOR 2019-2020			
QUARTER	NEW CLUB GOAL	NEW CLUBS	DROPPED CLUBS	QUARTER	MEMBER GROWTH NET GOAL	MEMBER GROWTH ACTUAL	DROPPED MEMBERS ACTUAL (including transfers)
JULY/AUG/SEPT	4	0	2	JULY/AUG/SEPT	223	429	462
OCT/NOV/DEC	7	0	0	OCT/NOV/DEC	343	0	0
JAN/FEB/MAR	5	0	0	JAN/FEB/MAR	225	0	0
APR/MAY/JUNE	6	0	0	APR/MAY/JUNE	260	0	0

GOALS AND ACTUAL NEW CLUBS CUMULATIVE



GOALS AND ACTUAL MEMBERS CUMULATIVE



DROPPED CLUBS: 2	180 CLUBS OF 750 ADDED 1 OR MORE NEW MEMBERS	GENDER DISTRIBUTION MALE 13,639 (71.48%) FEMALE 5,441 (28.52%)
DROPPED MEMBERS DECEASED 57 CLUB CANCELLED 0 OTHER 403 TOTAL 460	CLICK HERE FOR CUMULATIVE MEMBERSHIP DATA	TOTAL FAMILY UNIT MEMBERS 3,451 FAMILY MEMBERS PAYING HALF DUES 1,758